

# USER MANUAL

---



Set up and operational instructions of the  
Holsim Equine Distal Limb Nerve Block



---

## Equine Distal Limb Nerve Block

---

Revision A:  
Equine Distal Limb  
Nerve Block

Product SKU:  
E100-000

Last Updated:  
30 August 2023

---



# Parts List

## Components:

1. Buttonhead Screws x2
2. Electronics Panel
3. Power Switch
4. Buzzer Switch
5. LED Light
6. Leg Base
7. Nerve Insert
8. 35mm M6 Bolts x2
9. Injection Area

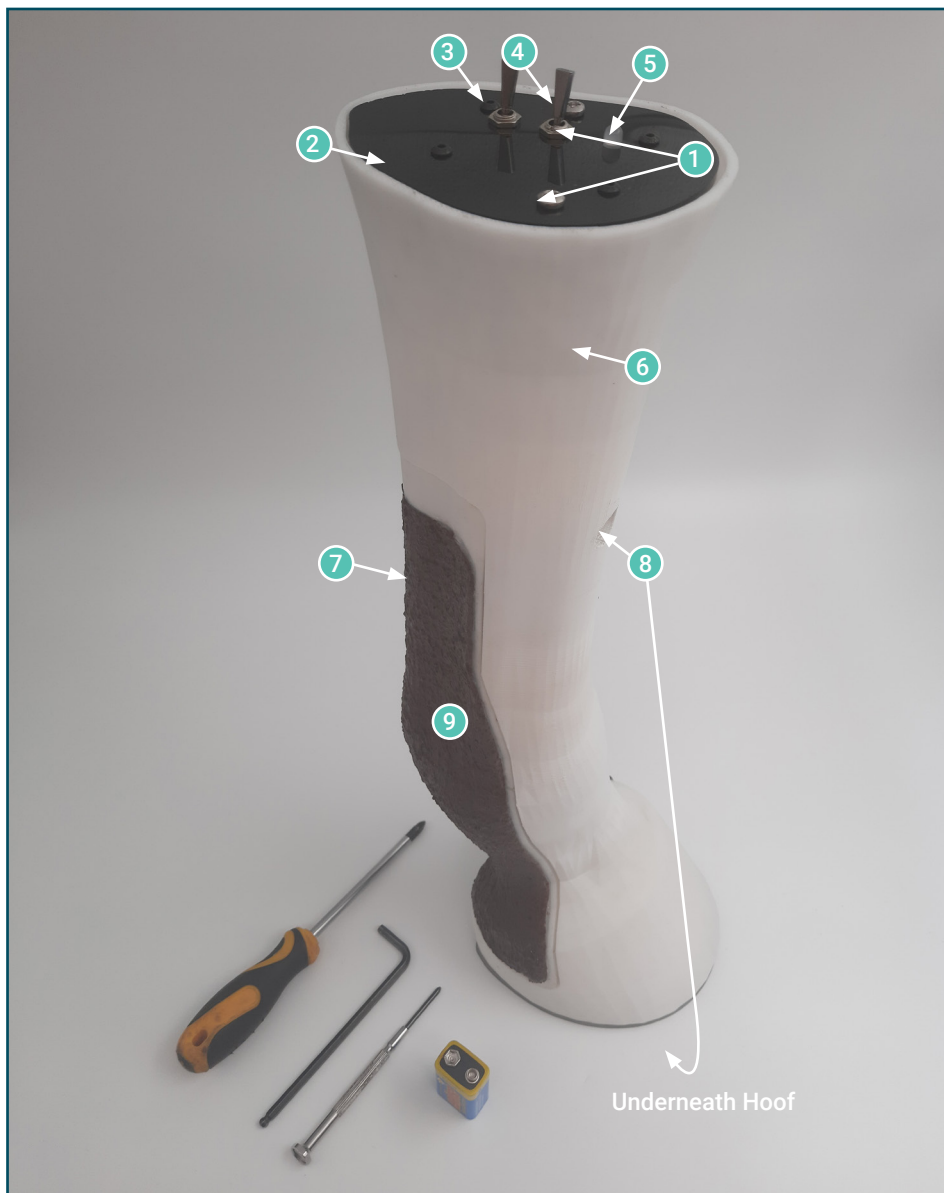
For all parts or repairs, please contact Holsim through our website: [www.holsim.co.nz](http://www.holsim.co.nz)

## You will need:

- Phillips Screwdriver
- 9V Battery x1
- Allen Key
- Appropriate Needle for Injection



# The Parts



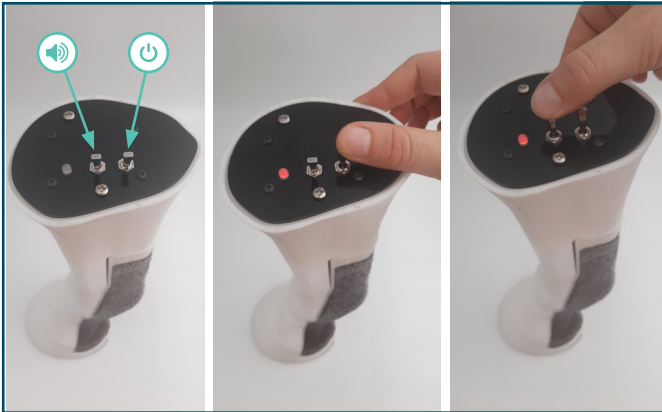


# Injection Points



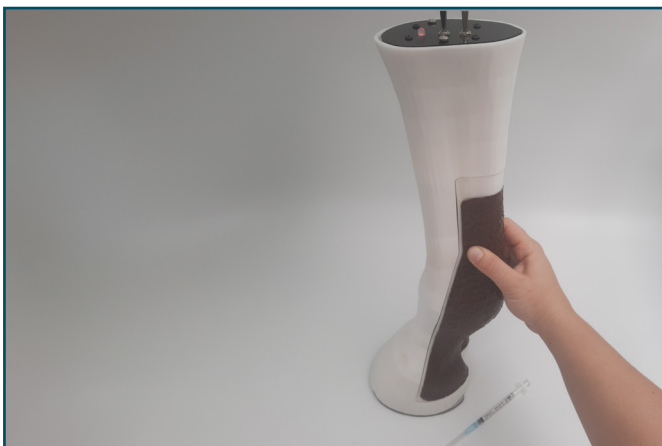


# User Operations



## 1 Turn on the Power & Buzzer switches

- LED will illuminate red when unit is switched on



## 2 Palpate injection area

**\*\*ATTENTION\*\***

**DO NOT INJECT LIQUID  
INTO THIS MODEL**



## 3 Insert needle



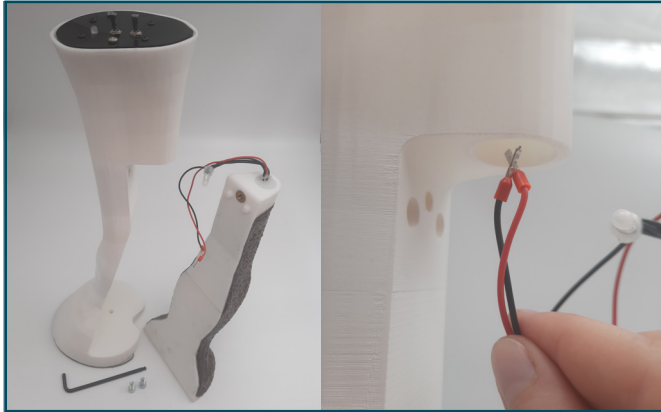
# Battery replacement



- 1** LED will illuminate Green & buzzer will sound when Nerve is located correctly
- Turn Off the Power & Buzzer switches once finished



# Nerve Insert Installation



- 1 Guide the Nerve Insert Wires into the top of the leg base



- 2 Carefully slot the nerve insert into the leg base



# Nerve Insert Installation



3

## Screw in bolts to fix insert in place

- Use an Allen Key to do up the x2 M6 bolts indicated, one on shin and one at the bottom of the hoof

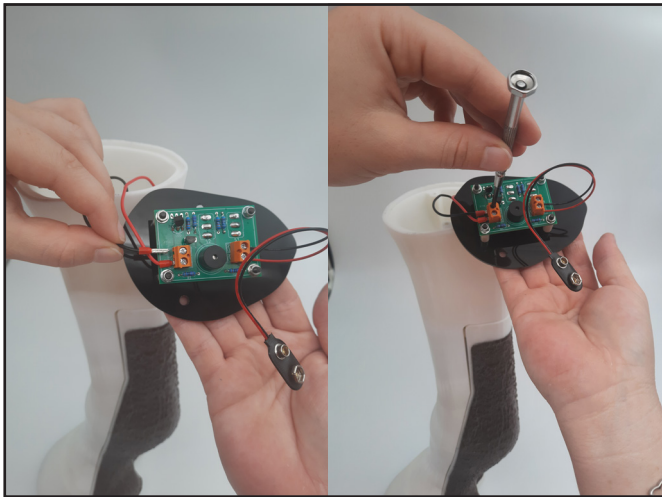


4

## Remove Electronics panel

- Remove top black electronics panel by undoing the two small screws indicated with a Phillips screwdriver





5

### Attach the nerve insert wires to the control unit

- Carefully locate wires into the indicated terminal and do up the small screws to secure in place
- Reverse process when uninstalling or replacing the nerve insert block



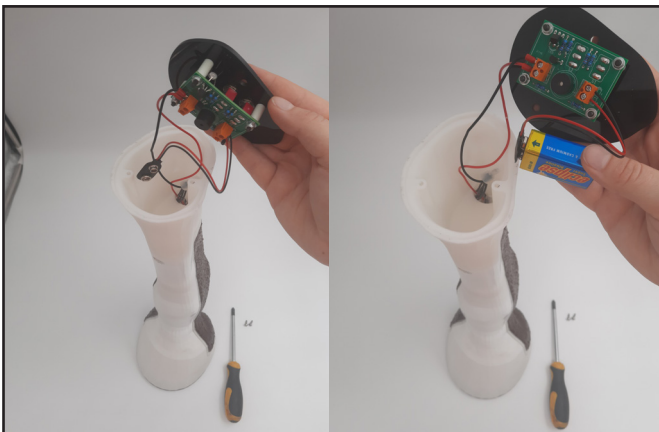
# Battery Replacement



1

## Remove Electronics panel

- Remove top black electronics panel by undoing the two small screws indicated with a Phillips screwdriver



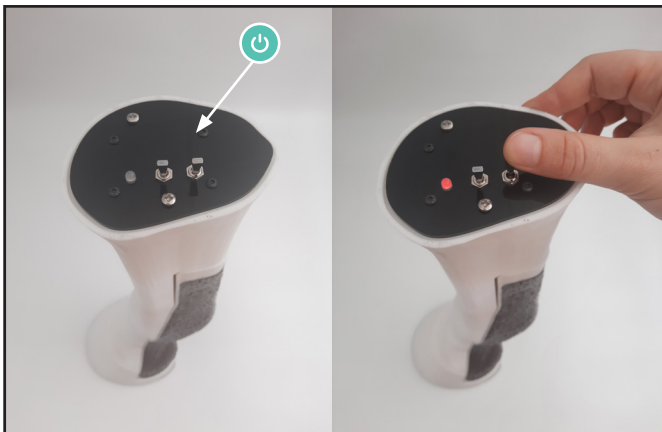
2

## Clip 9v Battery to terminal



**3 Place Battery in electronics compartment & Screw Panel in place**

- Re-attach top black electronics panel by doing up the two small screws indicated with a Phillips screwdriver



**4 Test Battery by turning the back Power switch on, LED will Illuminate Red when the unit is On**

- Back power switch indicated
- If LED does not illuminate check battery connection or replace with new battery



# Holsim

34D Somerset Street,  07 839 5018  
Hamilton, New Zealand  [info@holsim.co.nz](mailto:info@holsim.co.nz)